





Church Street, Ware, SG12 9EN

Westwood Leber are delighted to present this impeccably maintained two-bedroom ground-floor apartment, ideally situated in an exclusive development at the heart of Ware.

Boasting spacious living accommodation throughout, this stunning property features two generously sized double bedrooms, an en-suite shower room to the master, a luxurious family bathroom, and a beautifully appointed open-plan kitchen/living area. Originally an ex-show home, the apartment was built in 2018 and offers a modern, stylish living space.

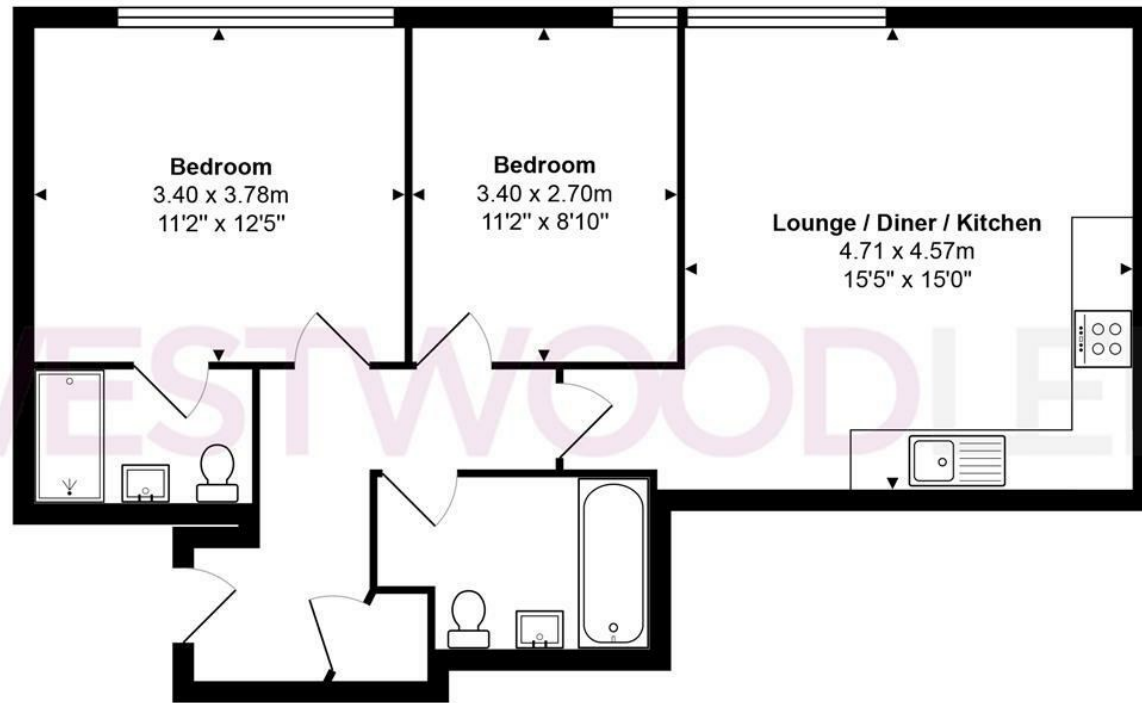
Additional benefits include allocated parking and breathtaking views of the picturesque Church Street.

An internal viewing is highly recommended to fully appreciate this exceptional apartment.



WESTWOODLEBER

WESTWOODLEBER
LET US GUIDE YOU HOME



Total Area: approx. 61.0 m² ... 657 ft²

THE FLOORPLAN IS FOR ILLUSTRATIVE PURPOSES ONLY AND IS NOT TO SCALE.

Measurements and features are approximate and may differ from the actual property. Verify all details independently; no liability is accepted for errors or omissions.

Property marketing provided by www.fotomarketing.co.uk





